

V Y B E

IN A CLASS OF ITS OWN.



VYBE 43

TOO **SEXY** TO BE A CATAMARAN.
TOO **CAPABLE** TO BE ANYTHING ELSE.

Monohulls trade space for style. Catamarans trade style for space. Both make you choose.

VYBE doesn't.

Twin asymmetric hulls. Standard marina berth. Two master cabins. 53 knots. The presence of a monohull, the volume and performance of a catamaran — the best of both worlds.

A new category. Built because the existing ones weren't enough.

Cantiere Del
V Y B E

THE RANGE



VYBE 43



VYBE 53



VYBE 66



VYBE 77



VYBE 43



VYBE 43



VYBE 43



V Y B E

43



VYBE 43



VYBE 43



VYBE 43



VYBE 43



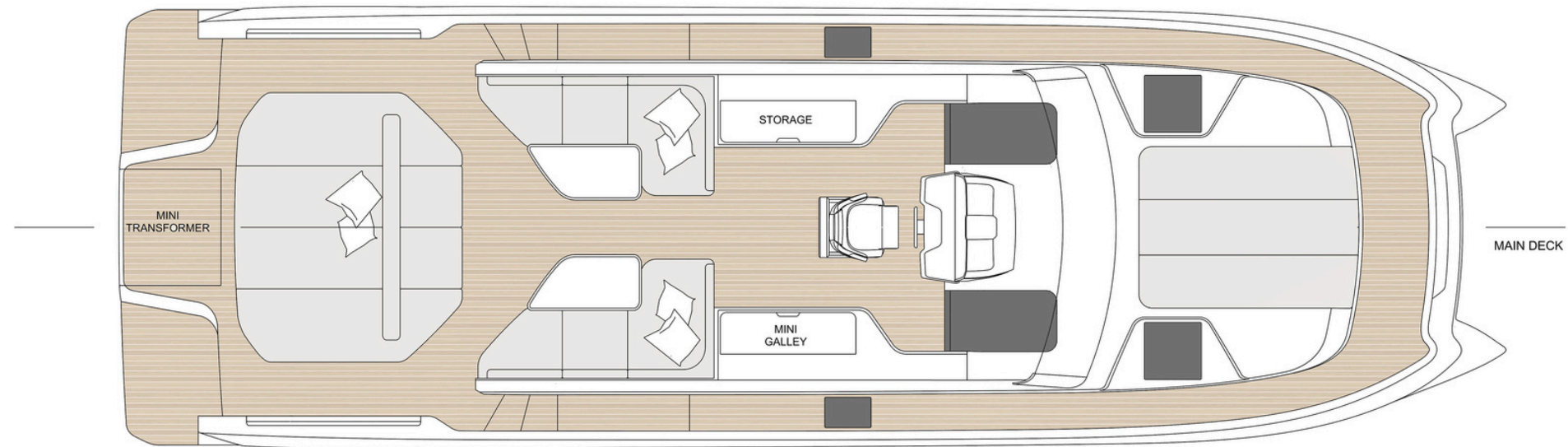
VYBE 43



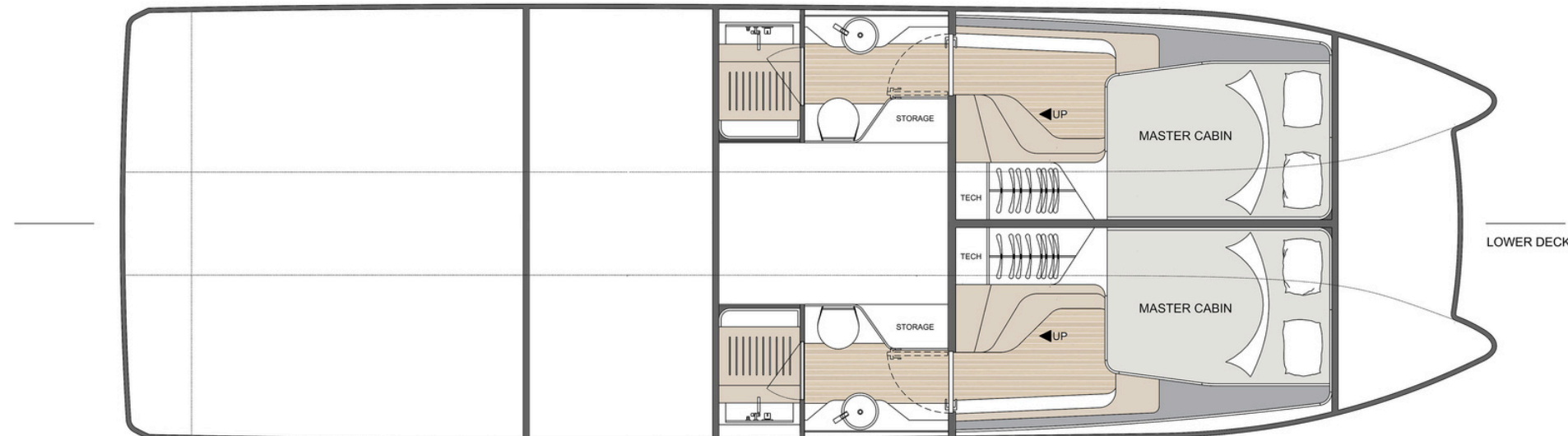
VYBE 43



VYBE 43



TWO MASTER CABINS.
TWO ENSUITE BATHROOMS.







VYB III 43



VYBE 43



V Y B E 43



V Y B E 43

SELECTED MATERIALS.
PERSONAL FINISHES.



FOGLIZZO
1921

GISSI



*INDUSTRY LEADERS.
SEAMLESSLY INTEGRATED.*

 **DOMETIC**

GARMIN®

VOID

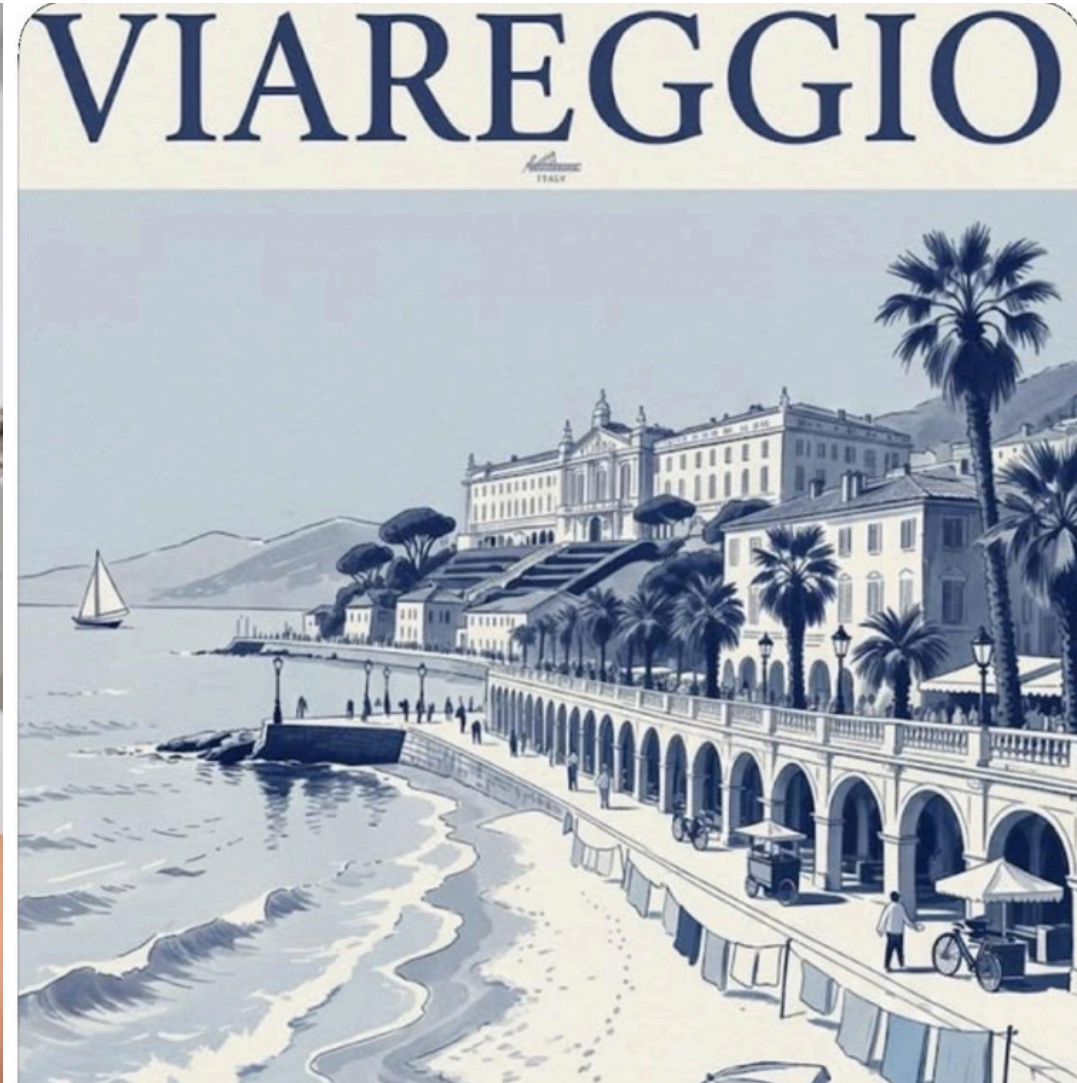


V Y B E 43

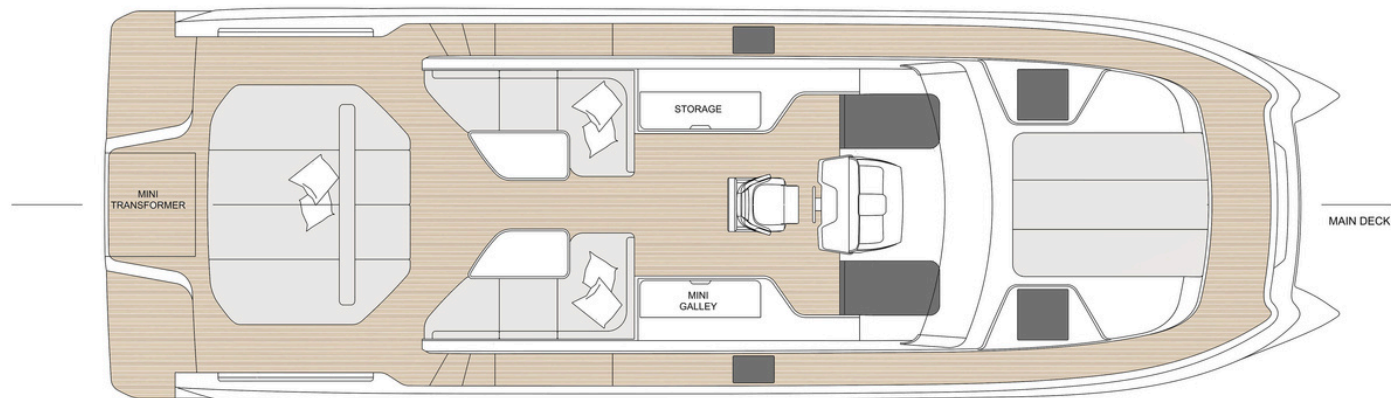
NOT WHERE IT STARTED.
WHY IT HAD TO EXIST.

BUILT IN VIAREGGIO

WHERE STANDARDS ARE SET



V Y B E 43



SPECIFICATIONS

Length Overall (L.O.A) :	12,67 m
Max. Beam:	3,97 m
Draft:	1 m
Fuel Capacity:	1900 L
Fresh Water Capacity:	350 L
Black Water Tank Capacity:	112 L
Number of passengers:	14 in B Category
Naval Architect:	Adam Younger
Designer:	Abbasli Design

ENGINE OPTIONS:

2 x Volvo Penta D6 480hp (Estimated Speed 46 knots at light load +/- 5%).

2 x Mercury V12 600hp (Estimated Speed 53 knots at light load +/- 5%).

TECHNICAL OVERVIEW

ENGINEERED WITH PRECISION.
BUILT WITHOUT COMPROMISE.

HULL STRUCTURE

- Vinylester infused composite sandwich construction
- Carbon fiber reinforcements in key structural areas
- Longitudinal and transverse framing for maximum rigidity

STANDARD EQUIPMENT

- Mase 6.5kVa generator
- Dometic air conditioning (32,000 BTU)
- Opacmare hydraulic gangway
- Garmin premium navigation system
- VOID sound system
- Quick double bow thruster
- Starlink satellite internet

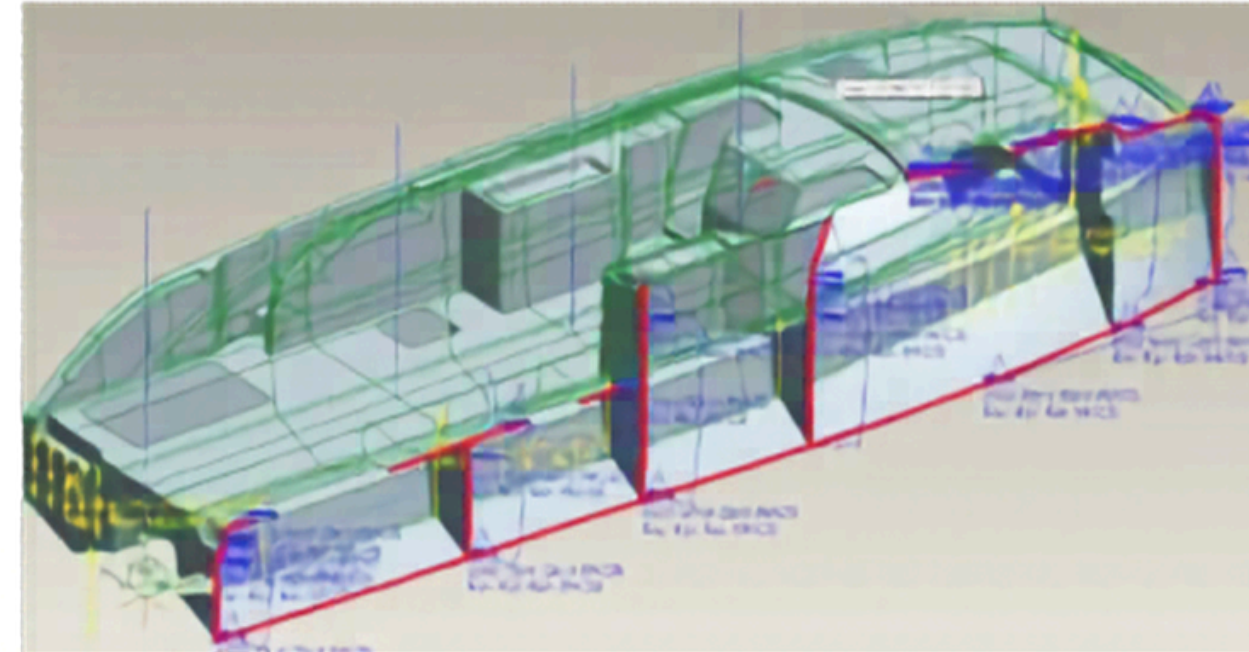
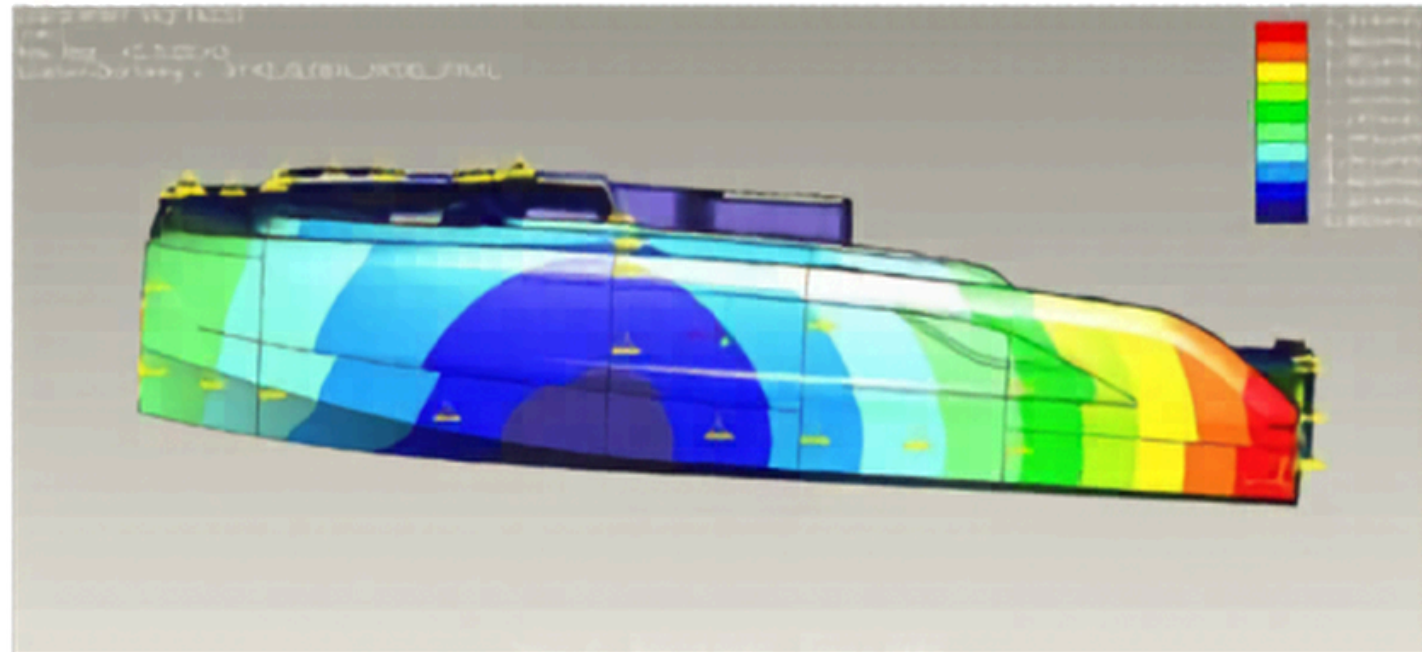
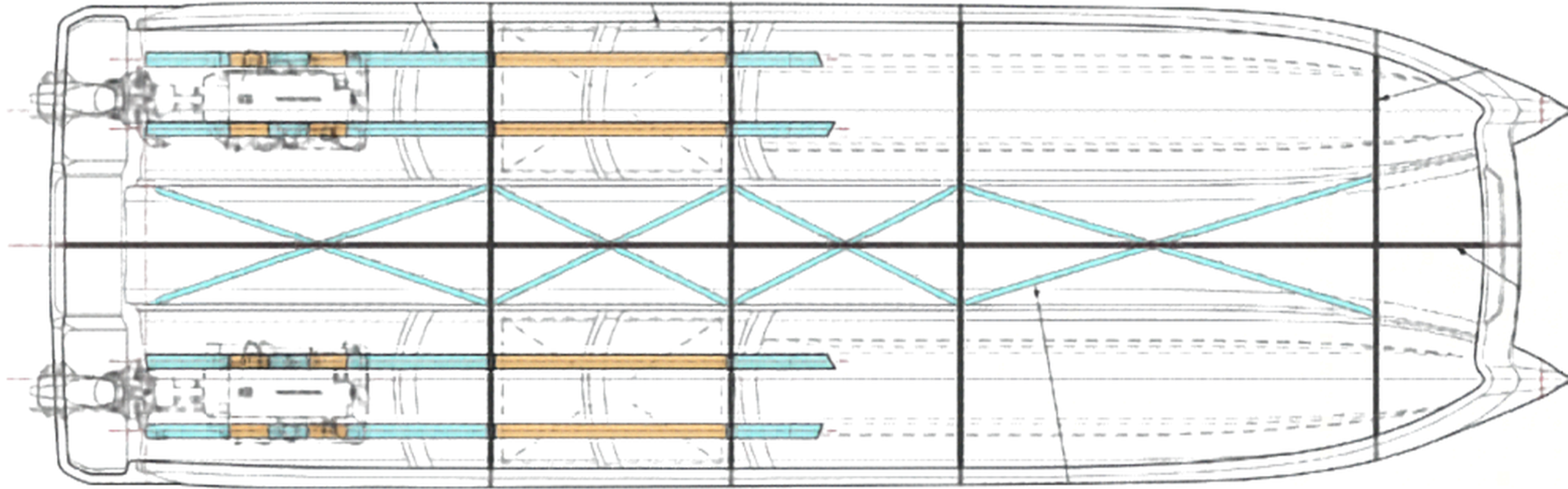
HULL DESIGN

- Twin asymmetric deep V hulls
- Triple steps to reduce hydrodynamic drag
- Aerodynamically optimized tunnel for "air cushion" lift effect

HARD TOP & INTERIOR STRUCTURE

- Carbon fiber hardtop (infused)
- Lightweight carbon infused flooring and partitions

STRUCTURAL DRAWINGS



FAST. EFFICIENT. STABLE.
THE IDEAL **CHASE BOAT.**

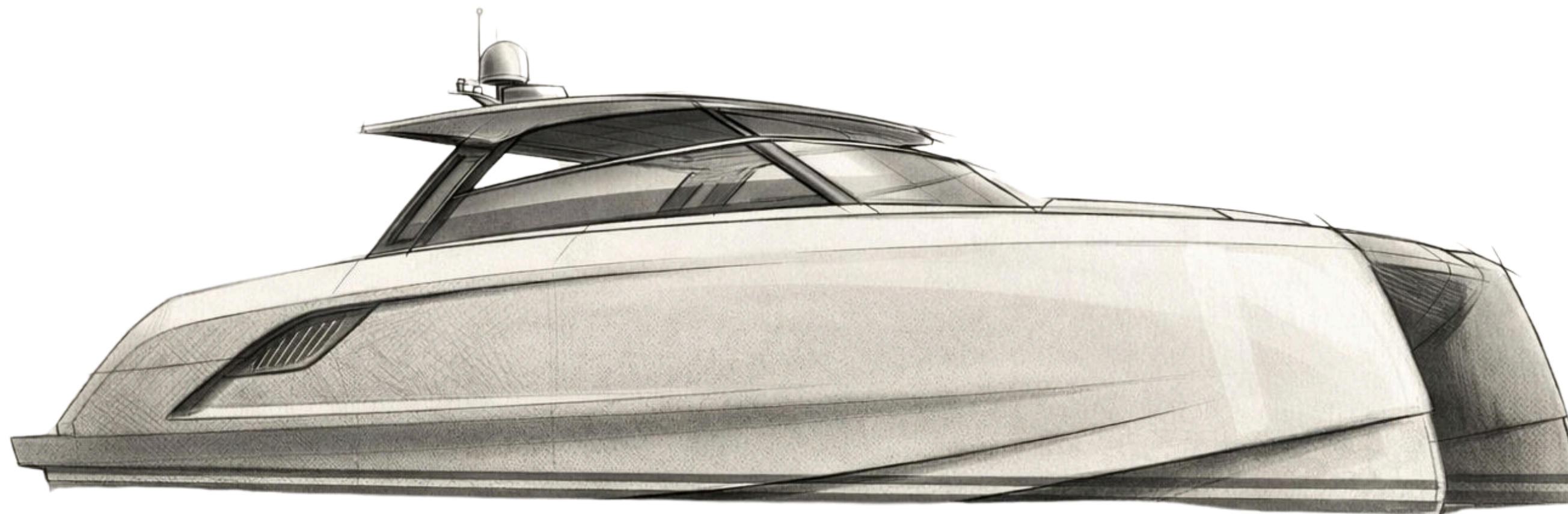
Reinforced towing points, integrated boarding solutions, dedicated chase boat configurations.
As capable as it is beautiful.

HULL DESIGN



BY ADAM YOUNGER.

EXTERIOR & INTERIOR
DESIGN



BY ABBASLI DESIGN.

Cantiere Del
VYBE

HI@VYBE.YACHTS - WWW.VYBE.YACHTS
CANTIERE DEL VYBE S.R.L VIA CARRIONA 201, 54033 CARRARA (MS), ITALY